



CAROLINA



Basic Rectangle featuring bi-fold glass doors and Draft Assembly. Shown in Toffee.



Rectangle with Arched Stiles, bi-fold doors and Draft Assembly. Shown in Copper Vein.



Rectangle featuring Window Pane Design, bi-fold doors and Draft Assembly. Shown in Granite.



Rectangle with bi-fold doors, Arched Stiles and Window Pane Design. Shown in Rust.

Features:

All Doors Custom Built to Fireplace Opening.

Bi-fold Glass Doors. Cabinet style (twin) optional

With or without Draft Assembly.

Rugged Steel Frame.

Overlap or Inside Fit.

Choice of Three Glass Colors: Clear, Bronze, or Grey. Optional 1/2" bevel*.

*Cannot be ordered with Window Pane Design.

Many Powder Coat Finishes to match any decor: see other side for available colors.

www.GlassFireplaceDoors.com

Available Finishes



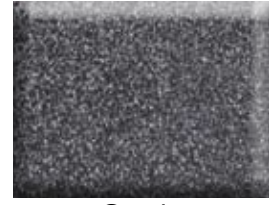
Ancient Age



Graphite



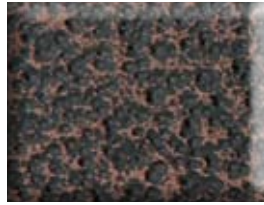
Classic Bronze



Granite



Mahogany



Copper Vein



Rust



Rustic Black



Solar Bronze



Textured Black



Vintage Iron



Natural Iron



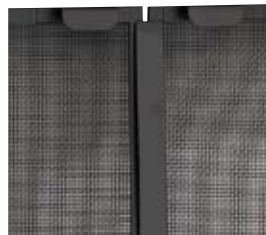
Toffee

Mix or match outer frame and door frame finishes. For example, combine a Textured Black outer frame with Natural Iron door stiles to create a two-tone look.

Mesh Options



Mesh Curtain

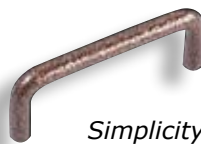


Gate Mesh

Available at:



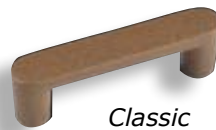
Handle Options



Simplicity



Waterfall



Classic



Contemporary



Rugged Steel



Knob



Milwaukee, Wisconsin