

Aluminum Finishes

Powder Coat



Ancient Age



Classic Bronze



Copper Vein



*Granite**



*Graphite**



Mahogany



Natural Iron



*Rust**



Rustic Black



Solar Bronze



*Textured Black**



Toffee



Vintage Iron



Brite Black



*Sandstone**



Merlot



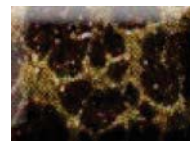
*Bronze Burst**



Blue Steel



Silver



Gold Vein

*Colors are approximate and may vary.
Asterisked finishes rated for outdoor applications.*

Anodized



*Antique Brass**



*Brite Brass**



*Satin Nickel**



*Satin Brass**

Handles



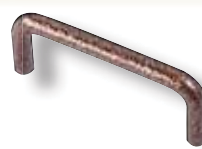
Classic-Brite Brass and Powder Coat Finishes



Contemporary-Satin Nickel and Powder Coat Finishes



Waterfall-All Finishes except Hand Crafted



Simplicity-All Finishes except Satin Brass



Rugged Steel-Powder Coat Finishes



Knob-All Finishes



Birdcage-Powder Coat Finishes

See Page 17 for handle options specific to Hammered Edge and Blacksmith Doors.

Steel Finishes

Powder Coat



Ancient Age



Classic Bronze



Copper Vein



Granite



Graphite



Mahogany



Natural Iron



Rust



Rustic Black



Solar Bronze



Textured Black



Toffee



Vintage Iron



Brite Black



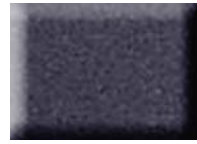
Sandstone



Merlot



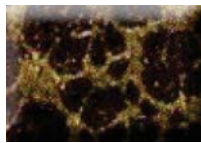
Bronze Burst



Blue Steel



Silver



Gold Vein

*Colors are approximate
and may vary.*

Boutique



Bronze Patina



*Oil Rubbed
Bronze*



*Antique
Brass*



*Antique
Copper*



*Polished
Brass*



*Polished
Copper*



Copper Stripe



Brass Stripe



Satin Brass



Satin Nickel

Satin

Polished

Hand Crafted



Forged Iron



Sierra Copper



Black Copper Edge



Black Silver Edge



Rustic Copper



11100 West Heather Avenue
Milwaukee, Wisconsin 53224
(414)371-1200

